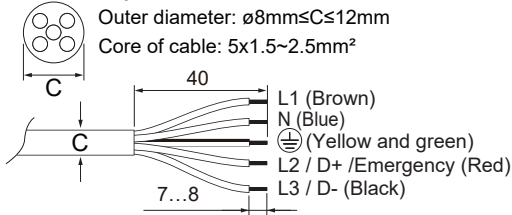


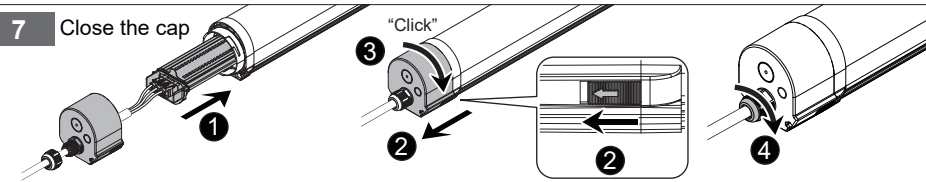
## Installation Steps

### 6-b Connecting Power DALI 5 Wires

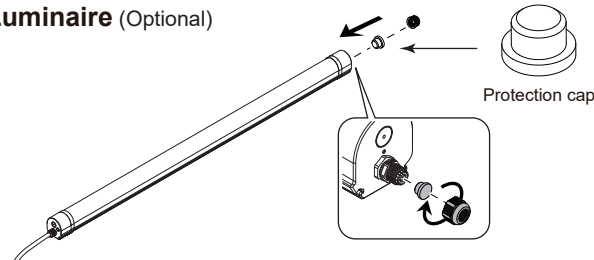
#### 5 Wires specification:



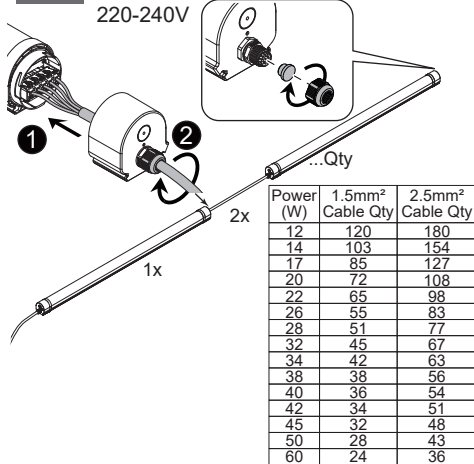
### 7 Close the cap



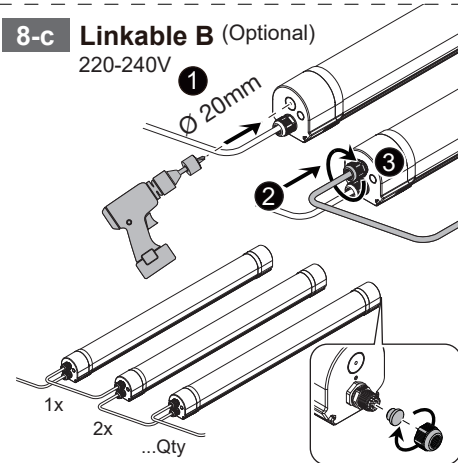
### 8-a Single Luminaire (Optional) 220-240V



### 8-b Linkable A (Optional) 220-240V



### 8-c Linkable B (Optional) 220-240V



# CALEX Fixum X16K

# Installation Manual

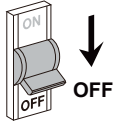
## IMPORTANT SAFETY NOTES



### WARNING RISK OF ELECTRIC SHOCK

#### BEFORE YOU BEGIN

- Read these instructions completely and carefully.
- The installation and connection of the luminaire must be done when switched off and by qualified people. Make sure no voltage while installation.



### CAUTION

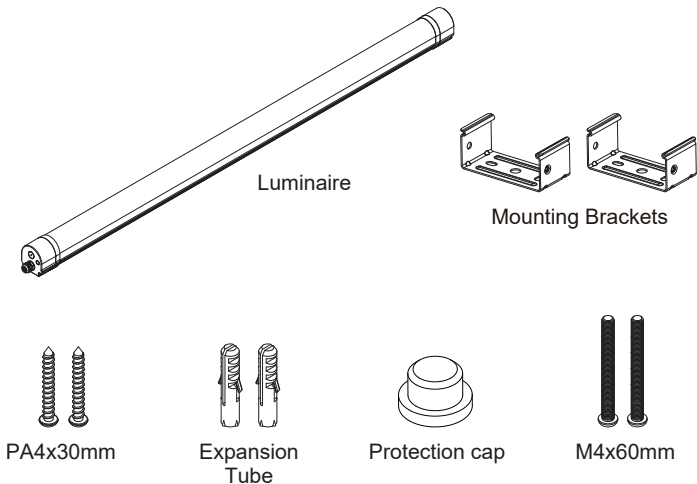
#### MAINTENANCE

- To avoid injuries, disconnect power to the light and allow the unit to cool down before performing maintenance.
- Perform visual, mechanical and electrical inspections on a regular basis. We recommend routine checks to be made on an annual basis. Frequency of use and environment should determine this.
- The Covers should be cleaned periodically as needed to ensure continued photometric performance. Clean the Cover with a damp, non-abrasive, lintfree cloth. If not sufficient, use mild soap or a liquid cleaner. Do not use an abrasive, strong alkaline or acid cleaner as damage may occur.
- Inspect the topside on the luminaire to ensure that it is free of any obstructions or contamination (i.e. excessive dust build-up). Clean with a non-abrasive cloth if needed.

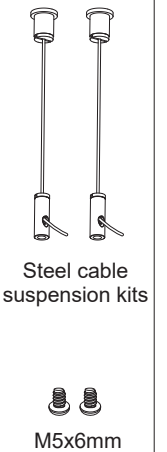


This product contains a light source of energy efficiency class D.

## Products



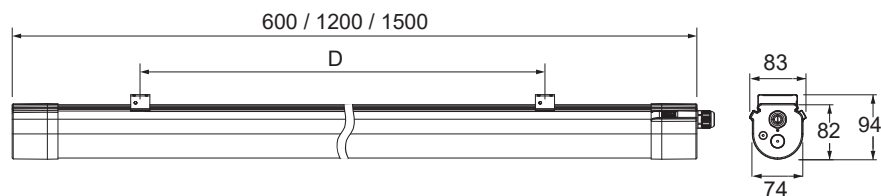
## Optional



DWG-P0974 (E)

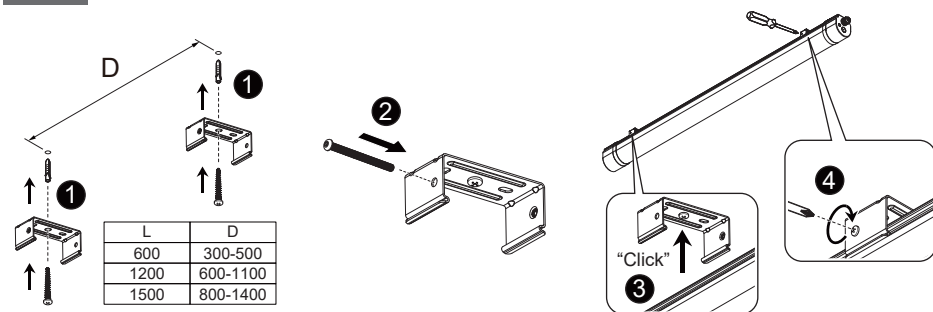
## Dimensions

[ mm ]

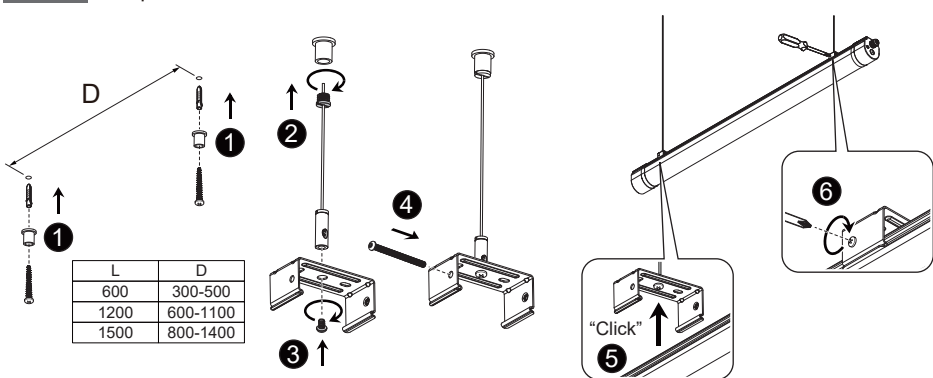


## Installation Steps

### 1-a Surface mounted

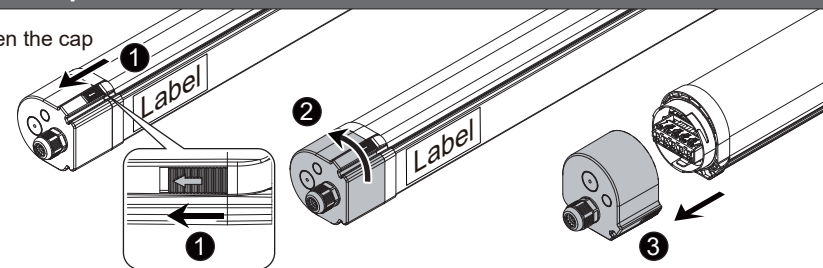


### 1-b Suspended mounted

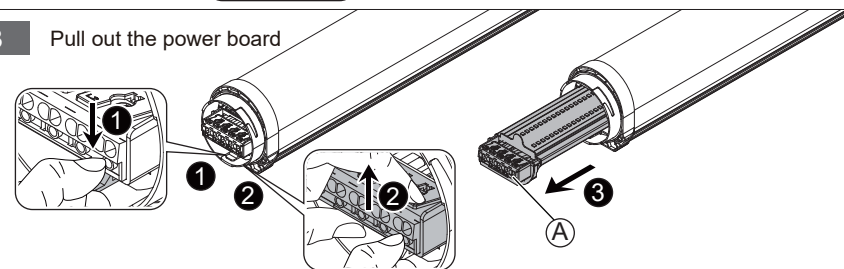


## Installation Steps

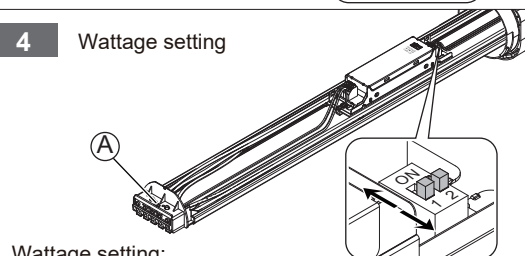
### 2 Open the cap



### 3 Pull out the power board



### 4 Wattage setting

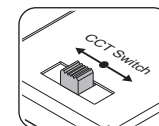


Wattage setting:

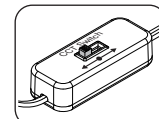
mA	Power(W)			
	600mm	1200mm	1500mm	1500mm
350	20	40	45	60
300	17	34	38	50
250	14	28	32	42
200	12	22	26	32

### 5 CCT Setting

CCT Setting (A)  
Dipswitch  
on Driver



CCT Setting (B)  
External  
DIP switch



### 6-a Connecting Power

#### ON / OFF 3 Wires

#### 3 Wires specification:

Outer diameter:  $\varnothing 8\text{mm} \leq C \leq 12\text{mm}$   
Core of cable:  $3 \times 1.5 \sim 2.5\text{mm}^2$

